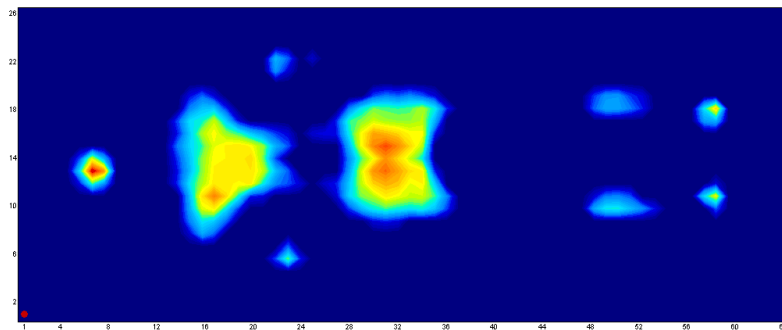




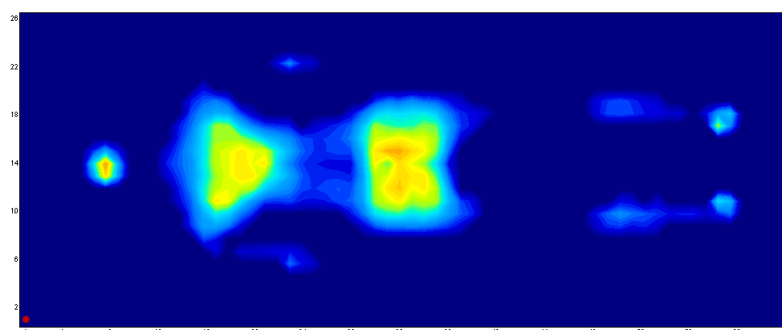
Key Features:

- Multi-layered and zoned foam improves pressure distribution and relieves pressure from anatomically high risk areas of the body
- High density foam with superior envelopment provides comfort to the patient
- Vapour permeable, fluid-proof and easy-to-clean cover
- 2-way stretch cover minimizes the risk of shear and friction (available with a 4-way stretch cover upon request)
- Anti-skid strips prevent shifting of the mattress when it is placed on the stretcher frame
- Lightweight design allows for easy caregiver functionality

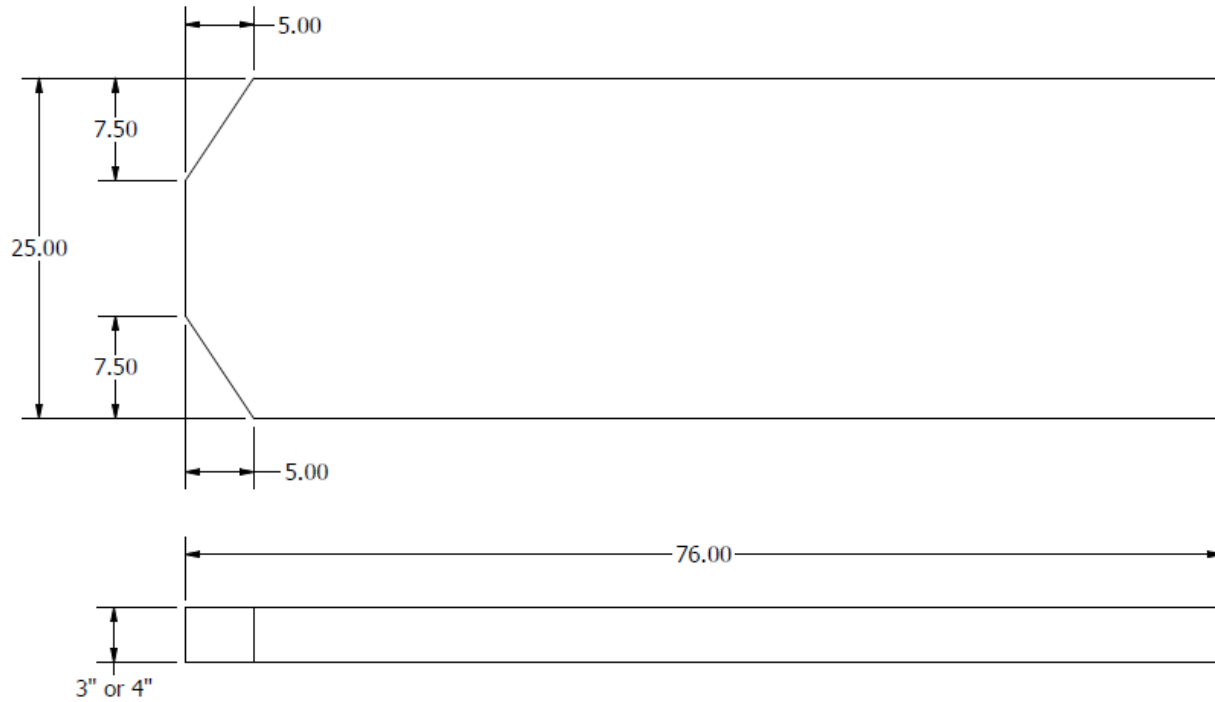
3" Pressure Map



4" Pressure Map



Dimensions



*Custom sizes are available upon request

Part Numbers

76" x 25" x 3"	S-MATT-FM-76253-TRA	76" x 30" x 3"	S-MATT-FM-76303-TRA
76" x 25" x 4"	S-MATT-FM-76254-TRA	76" x 30" x 4"	S-MATT-FM-76304-TRA



Amico Beds Corporation reserves the right to change product specifications without notice.

Warranty: Three years on parts